

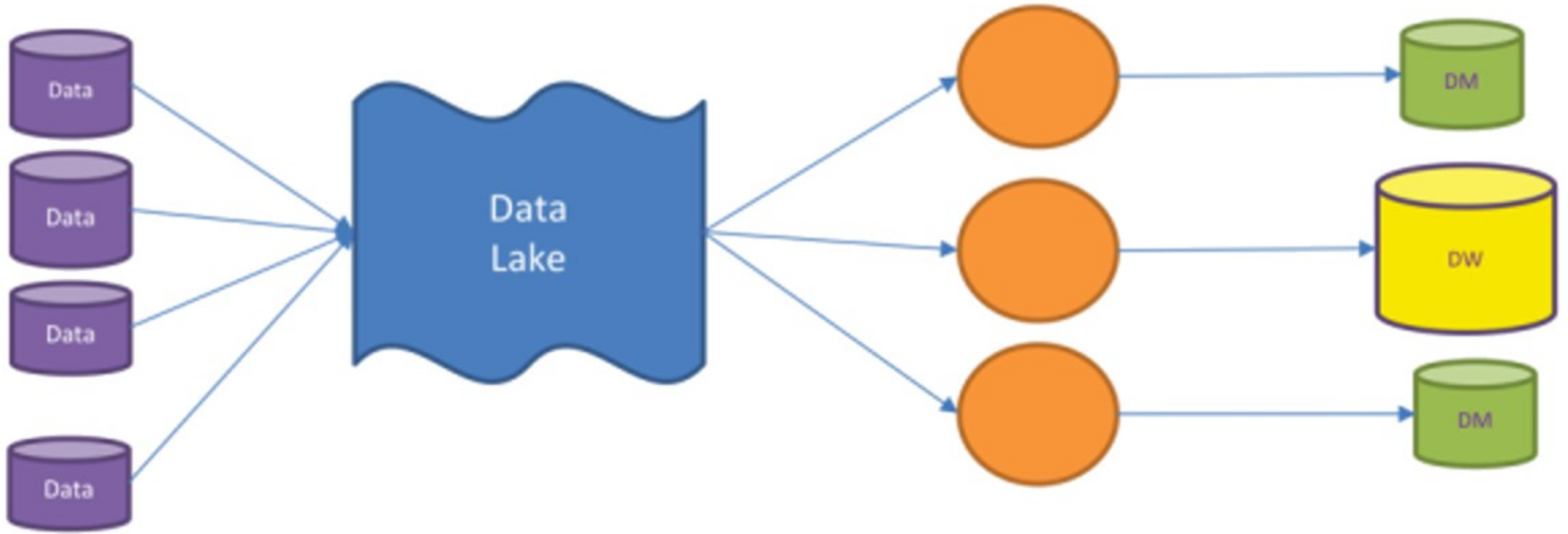
Workshop iModels Publiceren

Hoe werkt het en wat kun je ermee?

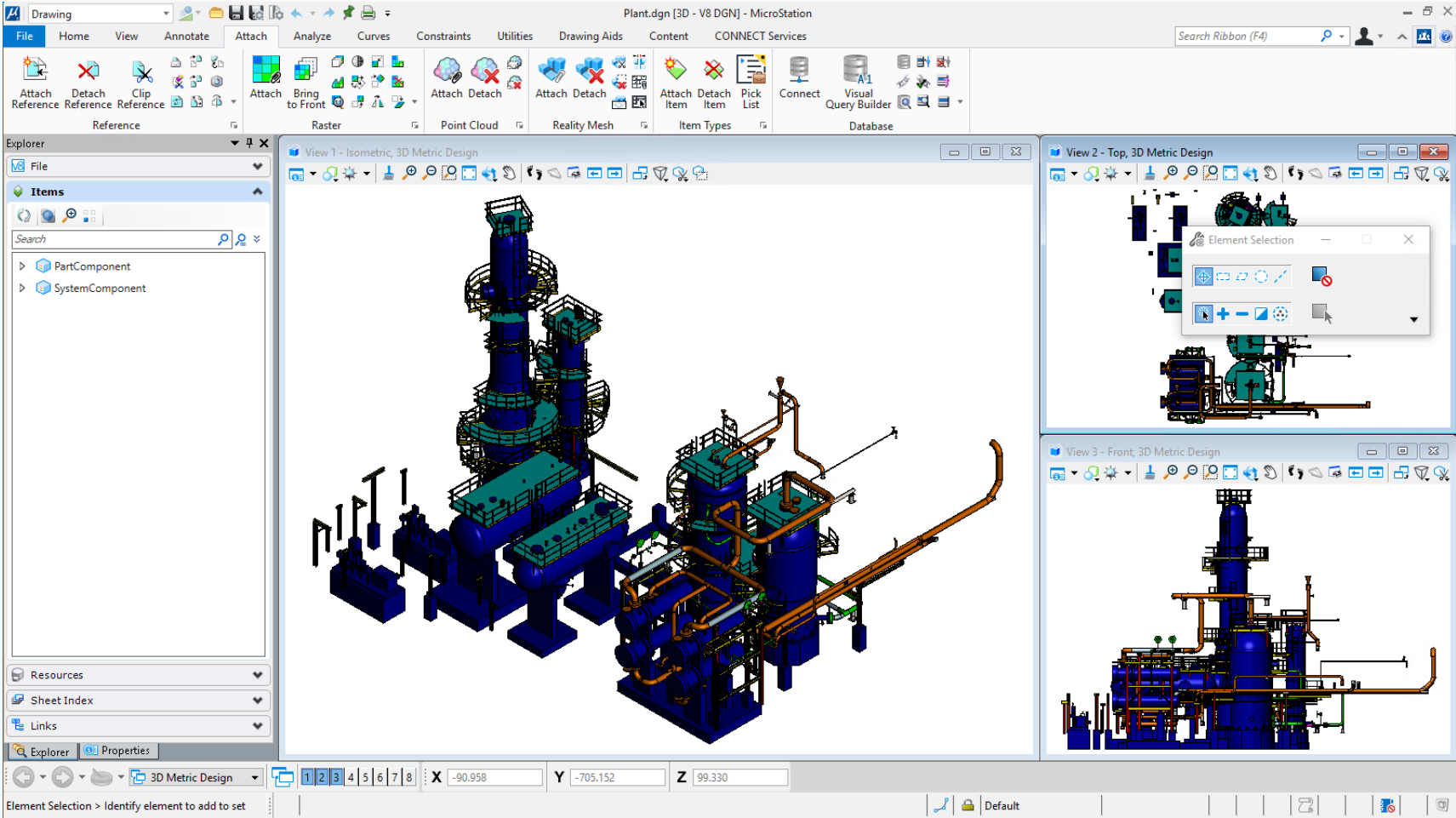
Dark Data

System of Record

System of Engagement



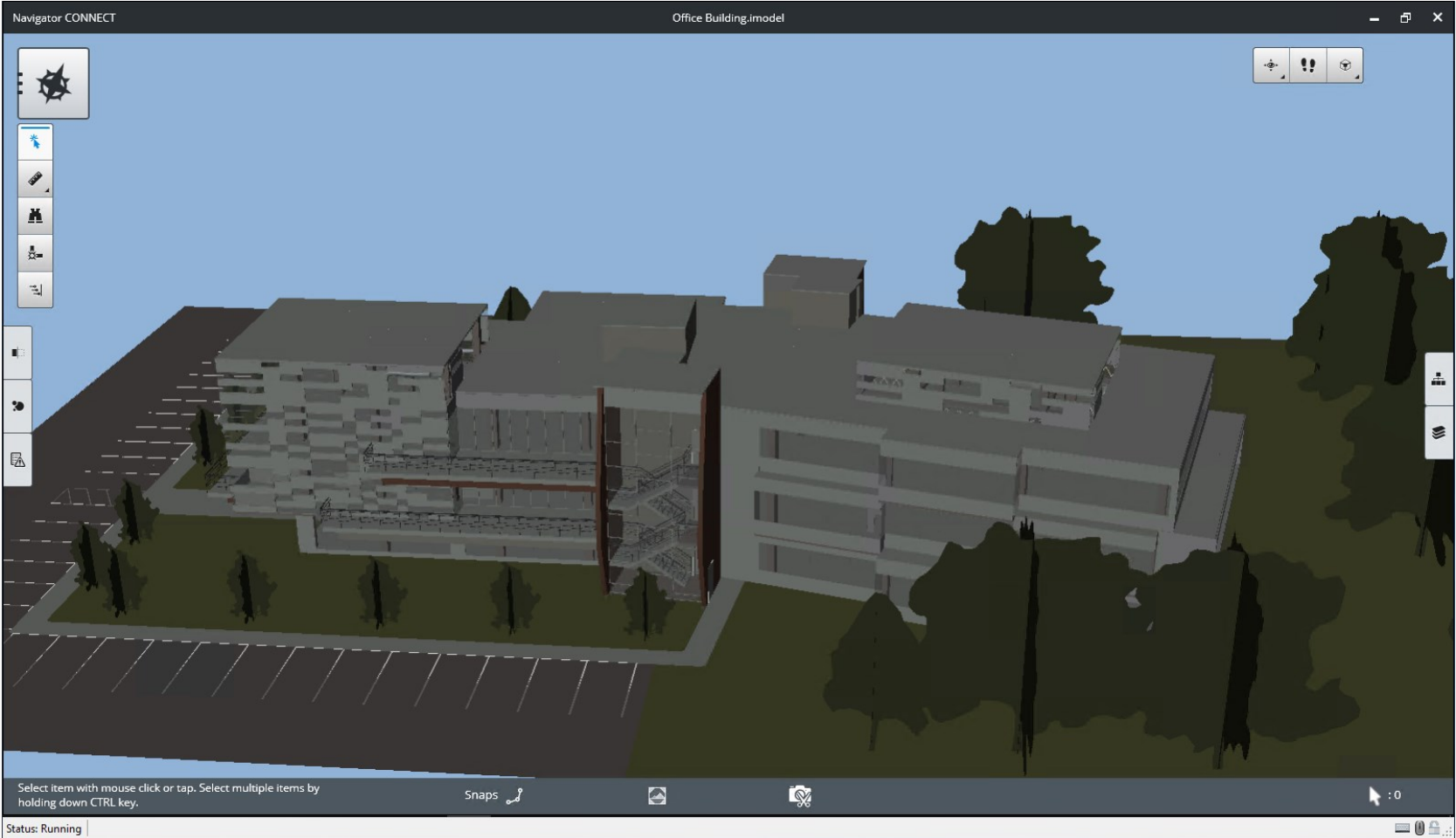
MicroStation CONNECT Edition



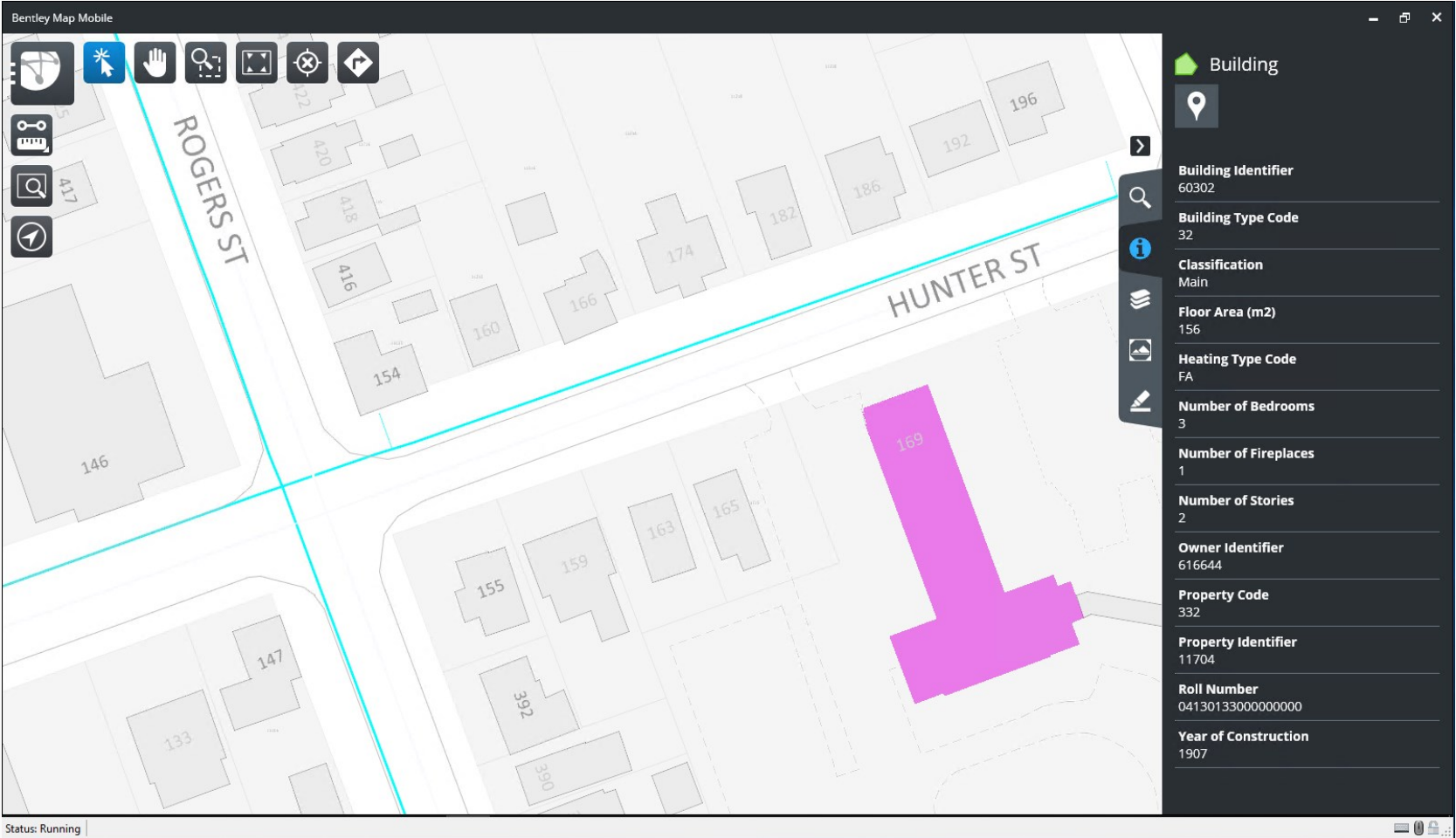
Bentley Map Mobile Converter

```
Windows PowerShell
[ ] Indexing: Commit
[ ] Compress: C:\Users\Documents\sisNET iModel Publishing\imodel\demo.idgn
dgn db t
[ ] Compress: completed successfully
[ ] Completed: 65306 elements converted
[ ] Completed: Elapsed time: 74 seconds
PS C:\Users\Documents\sisNET iModel Publishing\cmd> .\_PublishAll
Configuration file <C:\Users\Documents\sisNET iModel Publishing\etl-03\MapMobileConverter.config.all.xml>
[ ] Schemas: Convert Styles: C:\Users\Documents\sisNET iModel Publishing\dgn\demo_bdref.dgn
[ ] Schemas: Convert Styles: Filling [C:\Users\Documents\sisNET iModel Publishing\dgn\demo_bdref.dgn]
[ ] Schemas: Convert Styles: Loading Attachments [Standard]
[ ] Schemas: Convert Styles: Loading Attachments [C:\Users\Documents\sisNET iModel Publishing\dgn\gk9999-xfm.dgn]
[ ] Schemas: Convert Styles: C:\Users\Documents\sisNET iModel Publishing\dgn\gk9999-xfm.dgn
[ ] Schemas: Convert Styles: Loading Attachments [Standard]
[ ] Schemas: Convert Styles: [C:\Users\Documents\sisNET iModel Publishing\dgn\demo_bdref.dgn]
[ ] Schemas: Determining EC Schema
[ ] Converting: Graphics: C:\Users\Documents\sisNET iModel Publishing\dgn\demo_bdref.dgn
[ ] Converting: Graphics: Loading Attachments [Standard]
[ ] Converting: Graphics: Loading Attachments [C:\Users\Documents\sisNET iModel Publishing\dgn\gk9999-xfm.dgn]
[ ] Converting: Graphics: [C:\Users\Documents\sisNET iModel Publishing\dgn\gk9999-xfm.dgn]
[ ] Converting: Determining EC Schema
[ ] Converting: Graphics: C:\Users\Documents\sisNET iModel Publishing\dgn\gk9999-xfm.dgn
[=====] 98%
```

Bentley Navigator



Bentley Map Mobile



SQLite

The image shows a screenshot of the SQLite website and a Windows PowerShell terminal window. The website is the SQLite Home Page, located at <https://www.sqlite.org/index.html>. The page features the SQLite logo, a navigation menu with links for Home, About, Documentation, Download, License, Support, and Purchase, and a search bar. The main content area describes SQLite as a self-contained, high-reliability, embedded, full-featured, public-domain, SQL database engine. It also mentions that SQLite is the most used database engine in the world. A 'Latest Release' section highlights Version 3.25.3 (2018-11-05) with 'Download' and 'Prior Releases' buttons. A 'Common Links' section lists 'Features' and 'When to use SQLite'. The 'Sponsors' section lists Bloomberg, Bentley (Sustaining Infrastructure), and Navis Data. The Windows PowerShell terminal window is overlaid on the bottom right of the website, showing the execution of the `sqlite3 test.db` command. The terminal output displays the SQLite version (3.22.0) and the time (2018-01-22 18:45:57). The user enters `.help` for usage hints, then executes `create table test (id smallint, message varchar(16));`, `insert into test values (1, 'This is a test');`, and `insert into test values (2, 'This is also a test');` before finally typing `.quit`.

SQLite Home Page

<https://www.sqlite.org/index.html>

SQLite

*Small. Fast. Reliable.
Choose any three.*

Home About Documentation Download License Support Purchase Search

SQLite is a [self-contained](#), [high-reliability](#), [embedded](#), [full-featured](#), [public-domain](#), SQL database engine. SQLite is the [most used](#) database engine in the world. [More Info](#)

Latest Release: [Version 3.25.3 \(2018-11-05\)](#). [Download](#) [Prior Releases](#)

Common Links

- Features
- When to use SQLite

Sponsors

Ongoing development and support of SQLite is made possible in part by [SQLite](#)

Bloomberg **Bentley** **Navis Data**

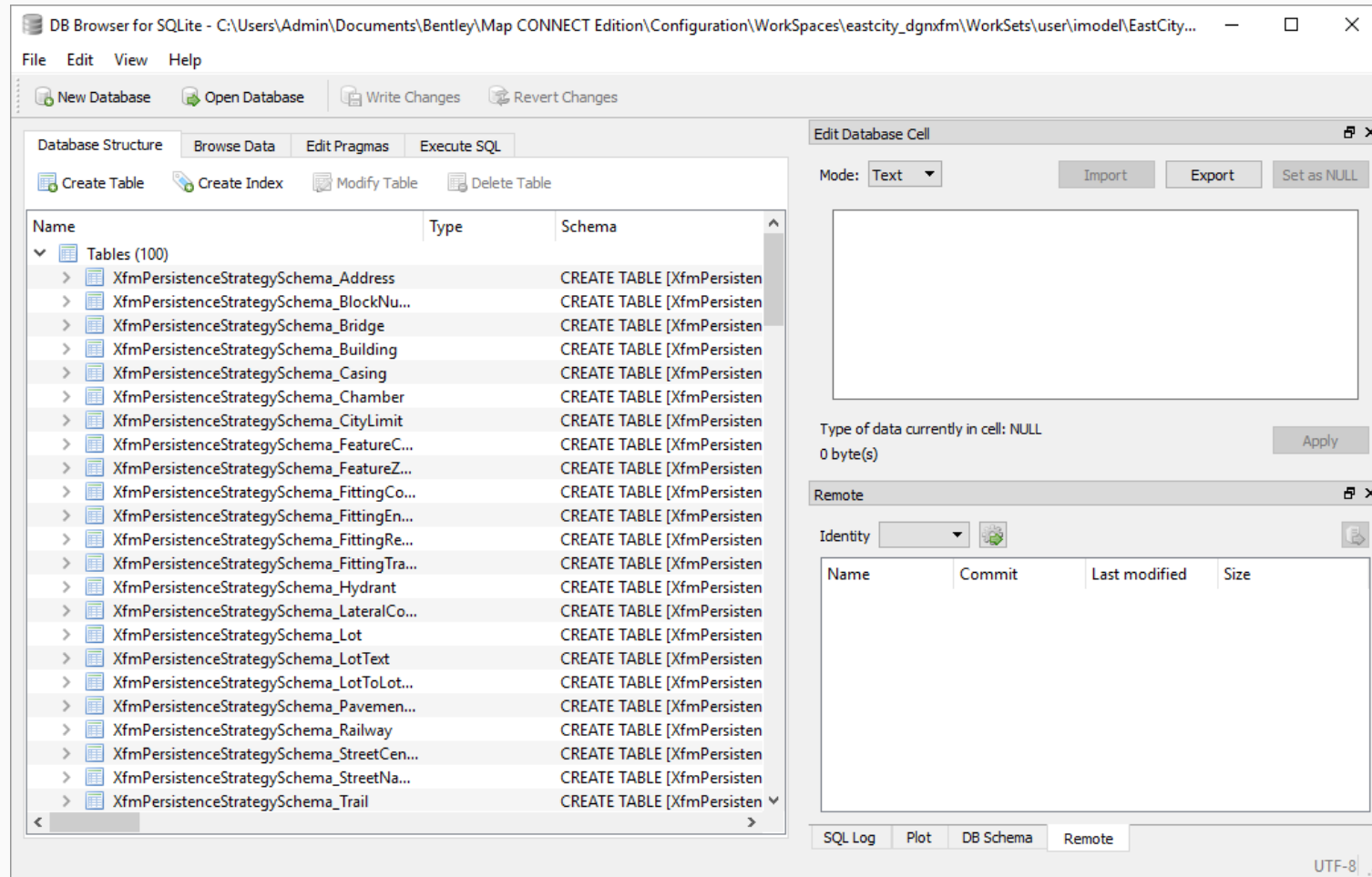
mozilla

Windows PowerShell

```
Windows PowerShell
Copyright (C) Microsoft Corporation. All rights reserved.

PS C:\Users\Gijsbert.Noordam> sqlite3 test.db
SQLite version 3.22.0 2018-01-22 18:45:57
Enter ".help" for usage hints.
sqlite> create table test (id smallint, message varchar(16));
sqlite> insert into test values (1, 'This is a test');
sqlite> insert into test values (2, 'This is also a test');
sqlite> .quit
PS C:\Users\Gijsbert.Noordam>
```

DB Browser for SQLite



Windows PowerShell

The image displays a Windows PowerShell ISE window and a Task Scheduler 'Create Task' dialog box. The PowerShell ISE window shows a script named 'Set-MapMobileConverter.config.EastCity.ps1' with the following content:

```
1 #
2 # Set-MapMobileConverter.config.EastCity.ps1
```

The 'Create Task' dialog box is open, showing the following configuration:

- Name:** Run Map Mobile Converter
- Location:** \
- Author:** [Redacted]
- Description:** Scheduled sisNET to Map Mobile Conversion
- Security options:**
 - When running the task, use the following user account: [Redacted] [Change User or Group...](#)
 - Run only when user is logged on
 - Run whether user is logged on or not
 - Do not store password. The task will only have access to local computer resources.
 - Run with highest privileges
- Hidden
- Configure for:** Windows 10

The background shows the PowerShell ISE interface with a 'Commands' pane on the right listing various PowerShell cmdlets such as Add-AppvClientConnectionGroup, Add-AppvClientPackage, Add-AppvPublishingServer, Add-AppxPackage, Add-AppxProvisionedPackage, Add-AppxVolume, Add-BCDataCacheExtension, Add-BitLockerKeyProtector, Add-BitsFile, Add-BmmcView, Add-CertificateEnrollmentPolicyServer, Add-Computer, Add-Content, Add-DnsClientNrptRule, Add-DtcClusterTMMMapping, Add-EtwTraceProvider, Add-History, Add-InitiatorIdToMaskingSet, Add-JobTrigger, Add-KdsRootKey, Add-LocalGroupMember, Add-Member, Add-MpPreference, Add-NetEventNetworkAdapter, Add-NetEventPacketCaptureProvider, and Add-NetEventProvider.

