



Digital Twin Oplossing

Workshop Watersight



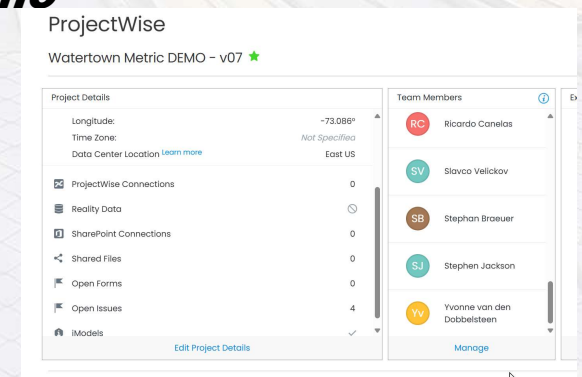
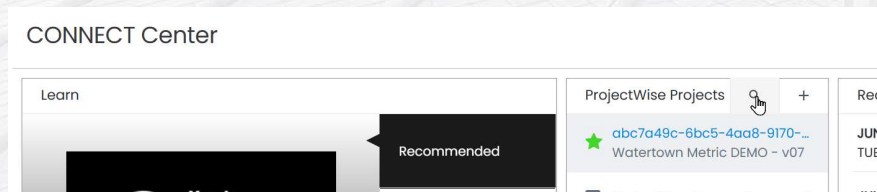
Objectives

Hoe kan een digital twin helpen bij het oplossen van een aantal problemen

- Simple deployment
- Cloud application that runs on Azure as SAAS
- Simple to use

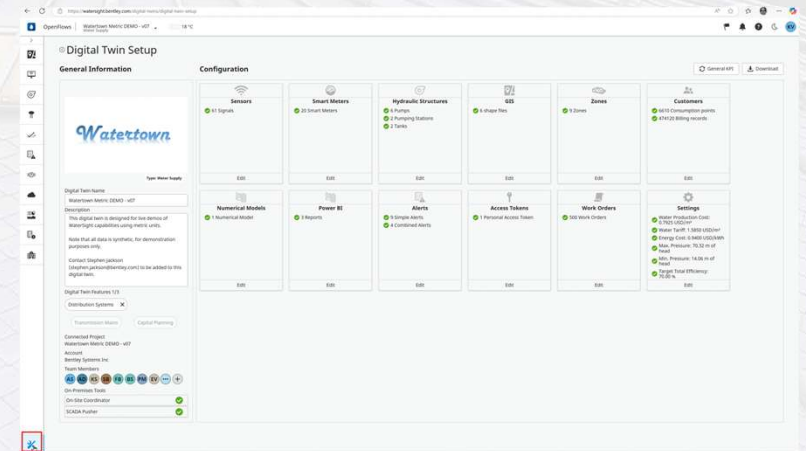
Check the Watertown project

- Go to the [Bentley portal](https://Connect.Bentley.Com) <https://Connect.Bentley.Com>
- Login into the portal with your Bentley account
- Check the project *Watertown Metric Demo*



OpenFlows WaterSight

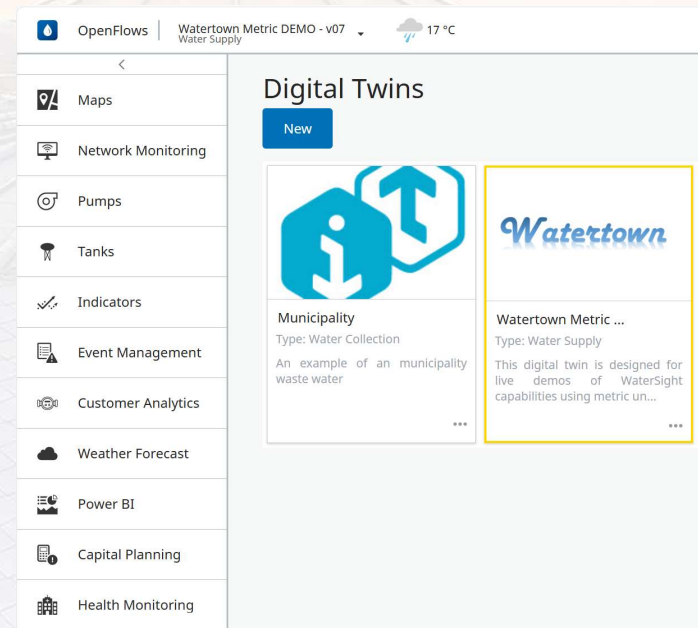
- **An extension of the standard iTwin Design Review**
 - Including collecting sensor data, all hydraulic data, billing data, pressure zones etc.
 - **Dashboard**
 - **Administration**
- **Example at**
<https://watersight.bentley.com/home>
2 pumpstations and 6 pumps





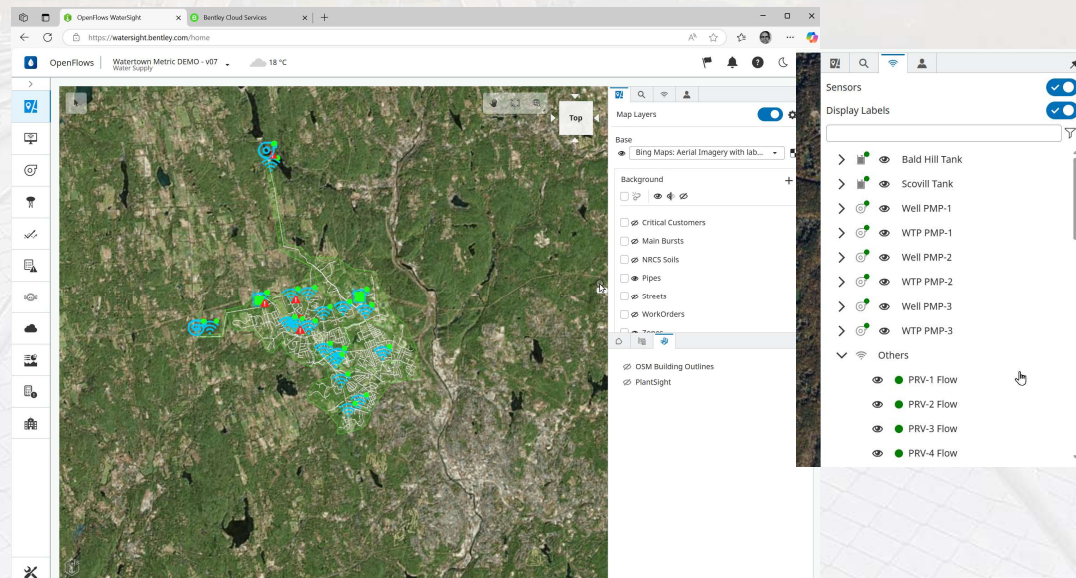
Start OpenFlows WaterSight

- OpenFlows WaterSight



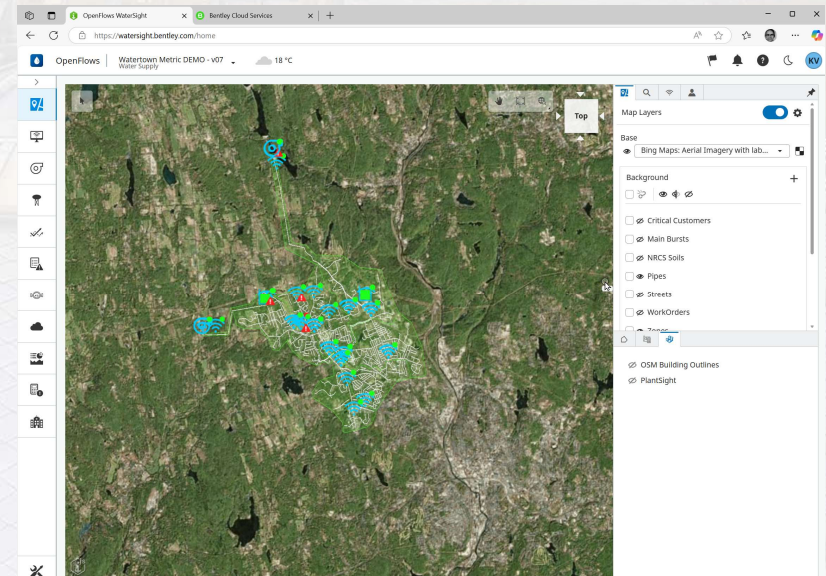
OpenFlows WaterSight

- **Check background map**
 - **Show the sensors**



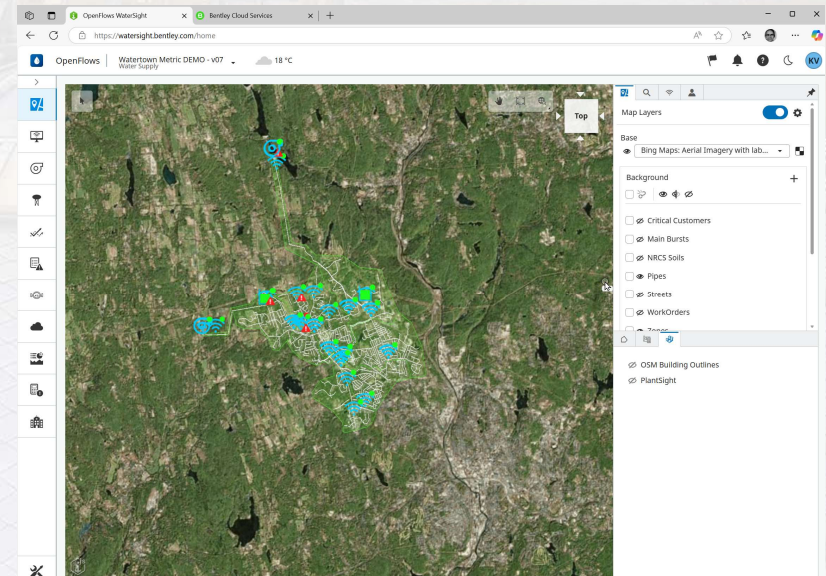
OpenFlows WaterSight

- **Display the hydraulic model**
 - **Display the various themes**
 - **Historic and current info and forecast**
 - **Realtime info about operation like pressure, flow, waterloss etc.**
 - **Info total area or per pressure zone**



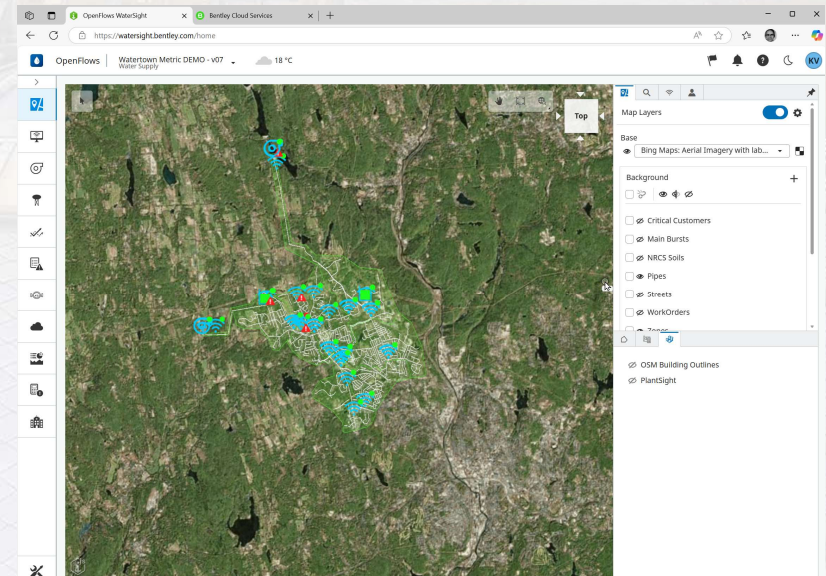
OpenFlows WaterSight

- **Check the dashboard**
 - **Network Analysis**
 - **Various sensors**
 - **KPI / indicators, costs**



OpenFlows WaterSight

- **Add an event like a pipe break and show isolation section**





Thank you

